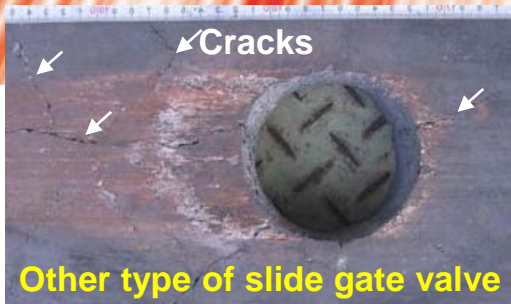


# Slide Gate Valve **SST**

Auto face pressure loading type



Used plate damage

**SHINAGAWA's new slide gate valve "type SST" reduces the working time to exchange plates and increases the plate life.**

- Auto face pressure loading system
- Light and suitable plate shape
- One bolt plate fixing
- Low maintenance cost.

Shinagawa has supplied "type SST" for 17 customers with  $\Phi 40\text{mm}$  ~  $\Phi 100\text{mm}$  bore

## Advantages of type SST

- **Auto face pressure loading system**

Loading system is very easy. Only to close the cassette and slide by an actuator

Increased stability of face pressure loading and releasing

- **Light and suitable plate shape**

Reduction in workload to worker

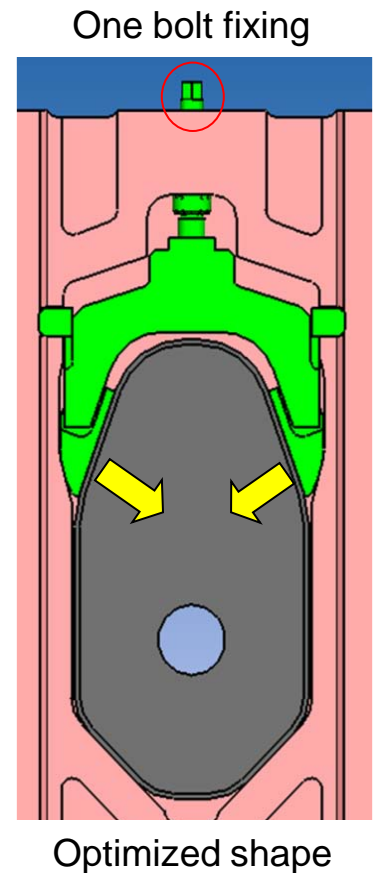
Suitable plate shape reduced crack damage of plate

- **One bolt plate fixing**

Even load reduce damage of plate

- **Low maintenance cost**

Reduction in the number of part



## Quick Tube Change "QTC" Device

SEN is quickly changed without air sucking by Shinagawa QTC.  
Easy to handle a nozzle, easy to maintain.

